



盐城亿高供热设备有限公司  
Yancheng Yigao Heating Equipment Co., Ltd.  
江苏省盐城市环保产业园

感谢您在众多的供热设备企业中选择了我们，  
我们会在售中和售后尽最大的努力来弥补售前的不足。

Thank you for choosing us among the many heating equipment enterprises,  
We will try our best to make up for the pre-sales shortage during and after sale.

## 工业供热专家

INDUSTRIAL HEATING  
SPECIALIST



盐城亿高供热设备有限公司  
Yancheng Yigao Heating Equipment Co., Ltd.

开户行:盐城市工行通榆中路支行  
账户:1109661509000051036  
税号:32090158967432

感谢您在众多的供热设备企业中选择了我们

Thank you for choosing us among the many  
heating equipment enterprises

# Content 目录

- 01 企业简介
- 02 企业资质与荣誉
- 03 专利证书展示
- 04 应用范围介绍
- 05 燃气模温机发展史
- 06 燃气模温机
- 11 低碳燃烧器
- 12 模温机的工作原理及特点
- 13 燃气模温机
- 14 电加热模温机
- 17 工程案例
- 20 为什么选择亿高?
- 21 网络销售



## Company Profile 企业简介

盐城亿高供热设备有限公司位于丹顶鹤之乡、麋鹿之都江苏盐城，地处装备制造业发达的长三角。亿高供热设备团队，从事研发与制造供热设备已有20余年，经验丰富，并且已在燃气、燃油、甲醛等多种供热设备方面取得多项发明和实用新型专利。

公司的主打产品——燃气模温机，作为一种新型供热设备能提供高效、稳定、清洁的热源，供家具、板材、化工、胶、食品、人造革、纺织、造纸等多行业使用。盐亿作为模温机行业的资深品牌，高质量、可定制化的产品和服务，只为满足您的每一个独特需求。

Yancheng Yigao Heating Equipment is based in the Environmental Industry Park of the Yancheng city, right within the area of Yangtze River Delta Region. Been engaged in the heating equipment industry for more than 20 years, our team has abundant experience in researching & developing and manufacturing various kinds of heating equipment, running on gas, fuel oil, formaldehyde and so on. We are also possessed with a number of inventions and utility model patents in heating equipment.

Our leading product, gas mold temperature controller, as a pioneer type of heating equipment, it provides efficient, steady and clean heat for furniture, panels, chemicals, rubber, food, artificial leather, textiles, paper and many other industries. As a senior brand in the mold temperature controller industry, Yanyi provides high-quality and tailored products and services, just to meet your every unique needs.

## Qualification And Honors 资质与荣誉

## Patent Certificate Display 专利证书展示

不管您是需要供热设备的生产厂家、要求供热配套的机械厂家、提供热能源产品的能源公司、机械设备的安装团队、各级经销商，还是任何一个想要了解供热设备的个体，只要您对我们的产品感兴趣，欢迎您随时联系我们。开放共赢、拥抱合作是我们不变的态度，我们期盼与各行各业促成可行的合作！

Whether you need heating equipment manufacturers, demand heating equipment equipment manufacturers, energy companies providing thermal energy products, mechanical equipment installation teams, dealers at all levels, or any individual who wants to know about heating equipment, as long as you are interested in our products, you are welcome to contact us at any time. Open and win-win, embrace cooperation is our constant attitude, we look forward to all walks of life to promote feasible cooperation!



营业执照  
Business license



高新技术企业证书  
High-tech enterprise certificate



江苏省民营科技企业  
Jiangsu Province private science and technology enterprises



盐城工程技术研究中心认定证书  
Certificate of Yancheng Engineering Technology Research Center



燃油(气)燃烧器型式试验证书  
Fuel oil (gas) burner type test certificate



燃油(气)燃烧器型式试验证书  
Fuel oil (gas) burner type test certificate



燃油(气)燃烧器型式试验证书  
Fuel oil (gas) burner type test certificate



一种制冷机强冷玻璃钢化炉  
REFRIGERATING MACHINE  
STRONG COLD GLASS TEMPERING  
FURNACE



一种模温机降温冷却保护装置  
THE UTILITY MODEL RELATES TO A  
COOLING PROTECTION DEVICE FOR  
A MOLD TEMPERATURE MACHINE



一种模温机生产用表面处理设备  
THE UTILITY MODEL RELATES TO A  
SURFACE TREATMENT DEVICE FOR THE  
PRODUCTION OF A MOLD TEMPERATURE  
MACHINE



一种具有减振防护功能的模温机  
THE UTILITY MODEL RELATES TO A MOLD  
TEMPERATURE MACHINE WITH THE  
FUNCTION OF VIBRATION DAMPING AND  
PROTECTION



一种玻璃钢化炉用炉丝结构  
THE INVENTION RELATES TO AN  
ELECTRIC FURNACE WIRE STRUCTURE  
FOR GLASS TEMPERING FURNACE



一种模温机加热管  
THE UTILITY MODEL RELATES TO A  
HEATING PIPE FOR A MOLD  
TEMPERATURE MACHINE



一种真空玻璃高温封边炉  
THE UTILITY MODEL RELATES TO A  
VACUUM GLASS HIGH-TEMPERATURE  
EDGE-SEALING FURNACE



一种真空玻璃高温封边炉  
THE UTILITY MODEL RELATES TO A  
VACUUM GLASS HIGH-TEMPERATURE  
EDGE-SEALING FURNACE



一种玻璃封边真空炉  
THE UTILITY MODEL RELATES TO A  
GLASS EDGE SEALING VACUUM  
FURNACE



一种玻璃点胶烘干炉  
A GLASS DISPENSING OVEN



一种模温机降温冷却保护装置  
THE UTILITY MODEL RELATES TO A  
COOLING PROTECTION DEVICE FOR  
A MOLD TEMPERATURE MACHINE



一种自动清洁模温机  
THE UTILITY MODEL RELATES TO AN  
AUTOMATIC CLEANING MOLD  
TEMPERATURE MACHINE



一种模温机用循环式加热装置  
THE UTILITY MODEL RELATES TO A  
CIRCULATING HEATING DEVICE FOR  
A MOLD TEMPERATURE MACHINE



一种模压机用的油循环控温机  
THE UTILITY MODEL RELATES TO AN OIL  
CIRCULATION TEMPERATURE CONTROL  
MACHINE FOR A MOLDING PRESS



一种节能型模温机  
THE UTILITY MODEL RELATES TO AN  
ENERGY-SAVING MOLD TEMPERATURE  
MACHINE

## Scope Of Application 应用范围介绍

反应釜、发泡机、鞋材加工、木材加工、热压机、干燥窑、碳化房、石油及化学、食品加工、塑料橡胶、造纸印刷、制胶、纺织印染。其他用途:各种工业用高温加热生产工艺的热源。

Reaction Kettle, foaming machine, shoes processing, wood processing, hot press, drying kiln, carbonization room, petroleum and chemical, food processing, plastic rubber, paper printing, rubber, textile printing and dyeing. Other uses: All kinds of industrial heat production process heat source.



### 石油及化学工业

聚合、缩合反应、蒸馏、精馏、浓缩、政法、熔融。

### Petroleum and chemical industry

Polymerization, condensation reaction and distillation, distillation, concentration, political science and law, melting.



### 纺织印染

热定型辊筒加热、烘房加热、热熔染色。

### Textile printing and dyeing

Hot finalize the design the rollers heating, drying room heating, hot melt dyeing.



### 木材加工

热压、干燥、木材加工及木制品、人造板。

### Wood processing

Hot, dry, wood processing, wood and man-made board.



### 造纸印刷

波纹板加工、纸张加工、油墨生产加工、热熔融干燥。

### Paper printing

Corrugated plate processing, paper processing, ink production processing, hot melt drying.



### 鞋材加工

发泡机、中底机。

### Shoes material processing Foaming machine, in the bottom.



### 塑料橡胶

热压、压延、挤压、硫化成型。

### Plastic and rubber

Hot pressing, rolling, extrusion, vulcanization molding.

## Gas Mould Warming Machine History Of Development 燃气模温机发展史

盐亿的产品根据客户设备使用要求,在外表上不断更新,在使用系统程度上不断升级,理好完善产品使用中的不足。设备在使用中如果出现断相,设备会自动停机。解决了电机缺相的故障,1次2次燃烧器点火不成功,机器里存在大量气体,系统会自动扫膛烟肉会排出大量的气体,安装了防爆装置,解决了安全隐患。

Yanyi products according to customer equipment use requirements, in the appearance of the continuous update, in the use of the system to improve the shortcomings of the use of products. If the equipment is out of phase in use, the equipment will stop automatically. Solve the motor phase failure. time 2 burner ignition is not successful, there is a lot of gas in the machine, the system will automatically sweep the chimney will discharge a lot of gas, explosion-proof device installed, to solve the safety risks.

### 发展历程



2014  
第一代



2017  
第二代



2019  
第三代

2021  
第四代

2023  
第五代

2024  
第六代



## Gas Mould warming machine 燃气模温机

### 燃气模温机-880产品数据

Thermal Oil Heater - Model YQW-88Q

型号 Model	YQW-88Q	额定功率 Power Rating	120KW	热效率 Thermal Efficiency	96%
油泵功率 Oil Pump Power	4KW	风机功率 Fan Power	0.75KW	设计压力 Design Pressure	0.6MPA
最高温度 Maximum Temperature	320°C	温控模式 Temperature Controller	PLC控制	进出油管 Inlet & Outlet Oil Pipe Diameter	45MM/45MM
燃气压力 Gas Pressure	7-9KPA	整备重量 Equipment Weight	1.2T	产品尺寸 Dimensions	2000X1000X1650MM

贴心完善的服务质量, 为您打消一切顾虑。不管是售前技术咨询、售后与您工厂设备的无缝对接, 还是正常使用之后的设备维护与维修, 只要您一声召唤, 我们的技术支持团队会以最快速度赶到现场, 为您解决问题, 到您满意为止。

Attentive and perfect quality of service, for you to dispel all concerns. Whether it is seamless pre-sales technical consulting, customer service and your factory equipment, or after normal use of equipment maintenance and maintenance, as long as you call our technical support team will be rushed to the scene with the fastest speed, to solve the problem for you, to your satisfaction.



### 燃气模温机-96Q产品数据

Thermal Oil Heater - Model YQW-96Q

型号 Model	YQW-96Q	额定功率 Power Rating	240KW	热效率 Thermal Efficiency	96%
油泵功率 Oil Pump Power	5.5KW	风机功率 Fan Power	1.1KW	设计压力 Design Pressure	0.6MPA
最高温度 Maximum Temperature	300°C	温控模式 Temperature Controller	PLC控制	进出油管 Inlet & Outlet Oil Pipe Diameter	50MM/50MM
燃气压力 Gas Pressure	7-9KPA	整备重量 Equipment Weight	2.0T	产品尺寸 Dimensions	2300X1170X1980MM

开放共赢、拥抱合作  
是我们不变的态度,  
我们期盼与各行各业促成可行的合作!

Open win-win cooperation is our constant attitude, and we look forward to working with all walks of life to facilitate cooperation!



**燃气模温机-96Q-E产品数据**

Thermal Oil Heater - Model YQW-96QE

型号 Model	YQW-96Q-E	额定功率 Power Rating	300KW	热效率 Thermal Efficiency	96%
油泵功率 Oil Pump Power	7.5KW	风机功率 Fan Power	1.1KW	设计压力 Design Pressure	0.6MPA
最高温度 Maximum Temperature	300°C	温控模式 Temperature Controller	PLC控制	进出油管 Inlet & Outlet Oil Pipe Diameter	50MM/50MM
燃气压力 Gas Pressure	7-9KPA	整备重量 Equipment Weight	2.2T	产品尺寸 Dimensions	2400X1170X1980MM

专业技能过硬的技术支持团队与研发团队，是我们所有信心与力量的来源。攻克技术难关、实现产品与您工厂环境的完美对接，这是我们对每一个客户的衷心承诺；大大领先于同业水平的研发能力，使得把握市场方向、研发前沿新品也成为我们的不倦追求。

Professional technical support team and R&D team, is the source of all our confidence and strength. To overcome technical difficulties and realize the perfect connection between products and your factory environment is our heartfelt commitment to every customer; greatly ahead of the industry level of research and development ability, so that grasp the direction of the market, research and development of frontier new products has become our tireless pursuit.



**燃气模温机-96QA产品数据**

Gas mold temperature machine -96QA product data

型号 Model	YQW-96QA	额定功率 Power Rating	350KW	热效率 Thermal Efficiency	96%
油泵功率 Oil Pump Power	7.5KW大流量	风机功率 Fan Power	1.5KW	设计压力 Design Pressure	0.6MPA
最高温度 Maximum Temperature	300°C	温控模式 Temperature Controller	PLC控制	进出油管 Inlet & Outlet Oil Pipe Diameter	50MM/50MM
燃气压力 Gas Pressure	7-9KPA	整备重量 Equipment Weight	2.5T	产品尺寸 Dimensions	2500X1170X1980MM

技术精湛的技术支持团队和研发团队是我们所有信心和力量的源泉。克服技术难题，实现产品与您工厂环境的完美连接，是我们对每一位客户的真诚承诺。引领研发能力处于同一水平，从而把握市场方向，研发新产品已成为我们不懈的追求。

The highly skilled technical support team and R&D team are the source of all our confidence and strength. It is our sincere commitment to each customer to overcome technical difficulties and achieve the perfect connection between the product and your factory environment. Leading the research and development ability at the same level, so that grasp the direction of the market, research and development of new products has become our tireless pursuit.



## Low Nitrogen Burner 低氮燃烧器

### 燃气模温机-470Q产品数据

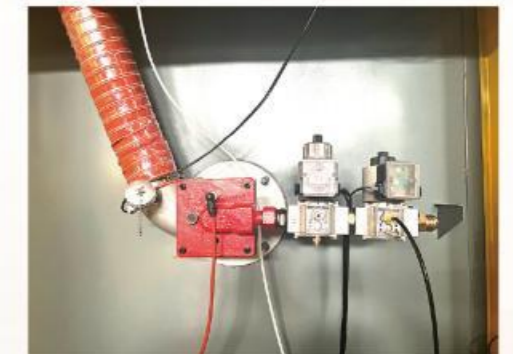
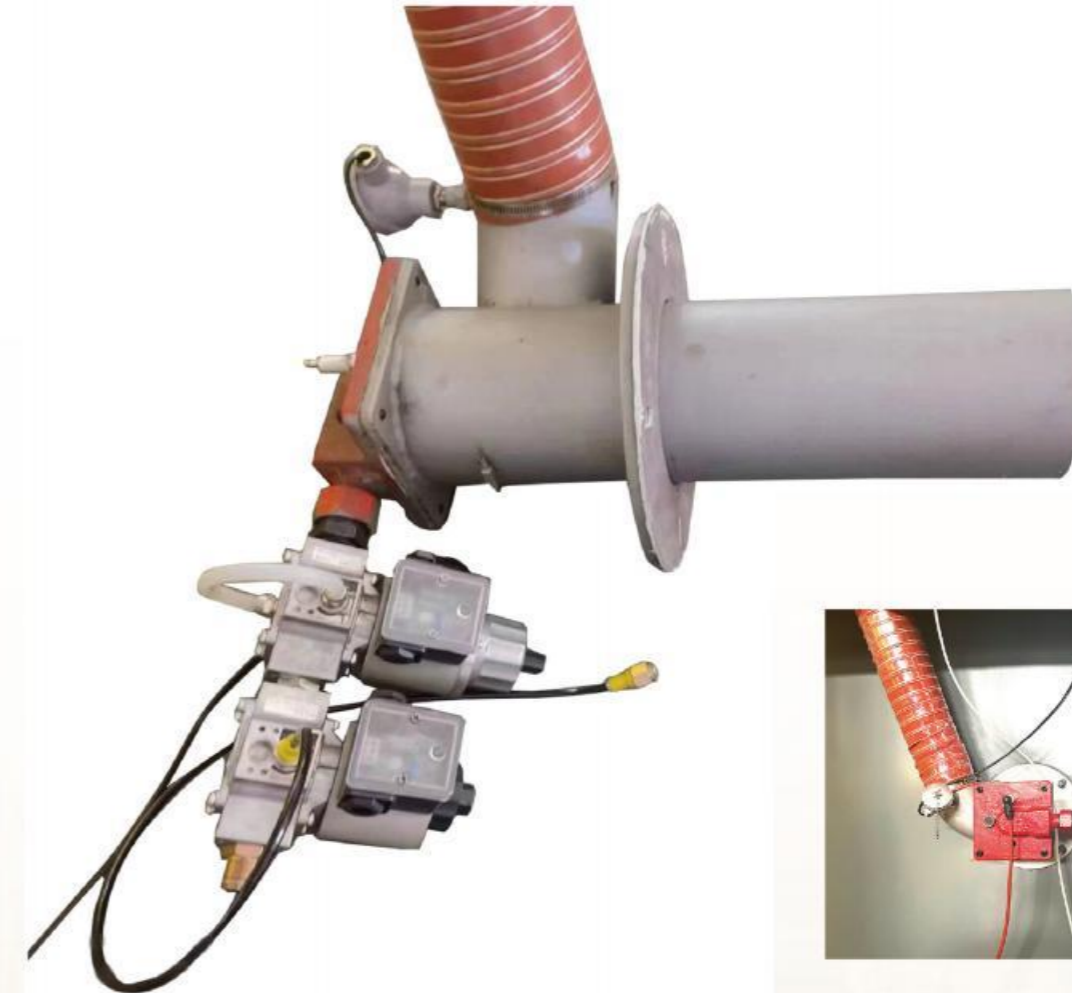
Gas mold temperature machine - 470Q product data

型号 Model	YQW-470Q	额定功率 Power Rating	500KW	热效率 Thermal Efficiency	96%
油泵功率 Oil Pump Power	15KW	风机功率 Fan Power	2.2KW	设计压力 Design Pressure	0.6MPA
最高温度 Maximum Temperature	300°C	温控模式 Temperature Controller	PLC控制	进出油管 Inlet & Outlet Oil Pipe Diameter	76MM/76MM
燃气压力 Gas Pressure	7-9KPA	整备重量 Equipment Weight	3.5T	产品尺寸 Dimensions	3000X1500X2300MM



十余年孜孜不倦的追求  
带来的革命性的技术进步

More than ten  
years of tireless pursuit,  
bringing revolutionary technological pro.



低氮燃烧器系统,充分燃烧炉膛燃烧碳化物  
里有机物不超出50—30毫克,确定达到国家排放  
标准。

根据国家的排放要求,我公司研发人员在  
2019年研发了低氮燃烧器,在燃烧中的氮氧化合  
物排放达到50—30毫克以下,使我们的产品在使用  
中更完善了产品中的不足之处。

Low N burner system, full combustion furnace  
combustion carbide organic matter does not exceed  
50-30 mg, to determine to meet the national emis-  
sion standards.

According to the national emission require-  
ments, our company's research and development  
personnel in 2019 developed a low nitrogen burner,  
nitrogen and oxygen compound emissions in  
combustion to 50-30 mg below, so that our products  
in use to improve the shortcomings of the product.

## Working Principles And Characteristics 模温机的工作原理及特点

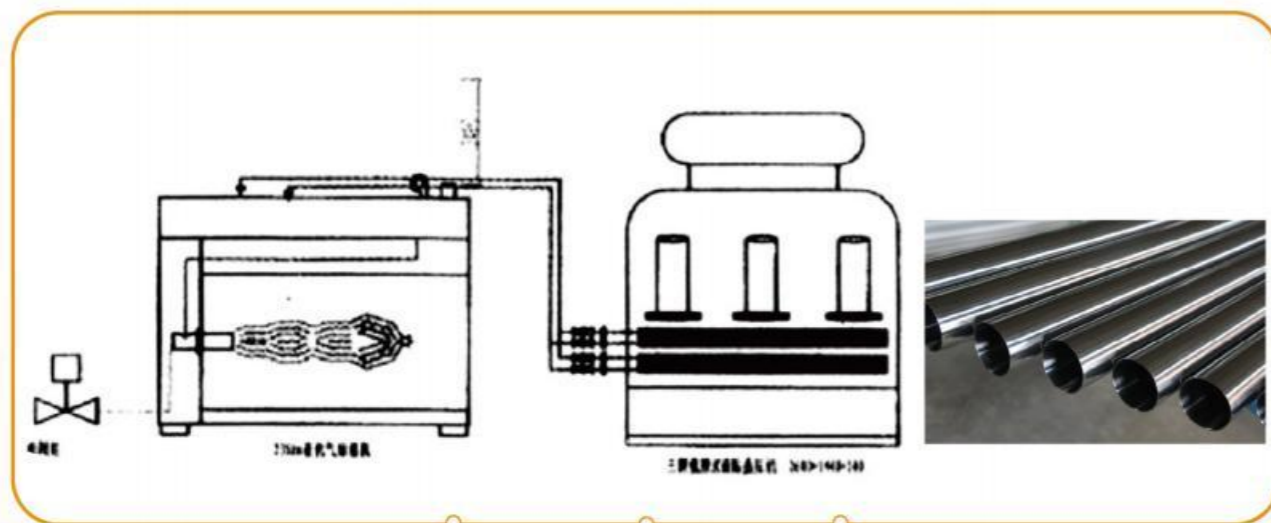
## Gas Mould Warming Machine 燃气模温机

设备上部由热能回收装置,通过废气余热对燃烧器进气进行加热。

The upper part, the heat recycling device, uses waste air to heat the newly entered oxygen

- 废气排出温度低,
- 使燃烧器进气温度高。

- Low exhaust gas discharge temperature,
- Make the intake temperature of the burner high.



余热回收:采用304不锈钢制作,使供热设备升温快效率高,节能环保耐热耐久使用寿命长。

Waste heat recovery: made of 304 stainless steel, so that heating equipment heating up fast, high efficiency, energy saving environmental protection, heat resistance and long service life.

通过减压阀输送可燃气体至我司模温机。在设备内燃烧,加热油管内部的导热油,再由导热油供给受热设备使用。

Combustible gas is transported to our heat transfer oil boiler through pressure reducing valve, and then boiled in the device so as to heat the heat transfer oil in the pipeline, which finally supplies heat to whatever needs the heat.

设备配有循环系统、排气系统,具备了完整独立的工作系统,安装、拆卸、使用方便。

With a complete and independent working system, including circulation system and exhaust air system, this device can be installed, dismantled and used easily.

### 详细技术参数

Detailed technical parameters

项目名称 PROJECT NAME	YQW-88Q	YQW-88QE	YQW-96Q	YQW-96QE	YQW-96QA	YQW-470Q	YQW-700Q
额定功率(KW) RATED POWER(KW)	120kw	180kw	240kw	300kw	350kw	500kw	700kw
进气温度(°C) INTAKE TEMPERATURE(°C)	130-170	130-170	130-170	130-170	130-170	130-170	130-170
热效率(%) THERMAL EFFICIENCY(%)	96	96	96	96	96	96	96
燃气压力(Kpa) GAS PRESSURE(Kpa)	6~9	6~9	6~9	6~9	6~9	6~9	6~9
最高温度(°C) MAXIMUM TEMPERATURE(°C)	300	300	300	300	300	300	300
本体储油(kg) BULK OIL STORAGE(Kg)	110	150	200	250	300	350	500
油泵功率(KW) OIL PUMP POWER(KW)	4	4	5.5	7.5	7.5	15	15
油泵流量(m³/h) OIL PUMP FLOW(m³/h)	20	20	25	30	45	43	43
油泵扬程(m) OIL PUMP HEAD(m)	32	32	35	48	40	60	60
风机功率(KW) FAN POWER(KW)	1.1	1.1	1.1	1.1	1.5	3	5.5
输入输出内径(mm) I/O BORE DIAMETER(mm)	50	50	50	50	65	80	80
耗气量(m³) AIR CONSUMPTION(m³)	12	18	24	30	36	48	72
外形尺寸(长/mm) OVERALL DIMENSION(L/mm)	2000	2200	2350	2400	2500	2900	3500
不含风机(宽/mm) EXCLUDING FAN(W/mm)	900	1170	1170	1170	1170	1400	1500
(H/mm) (H/mm)	1730	1730	1980	1980	1980	2300	2300
设备重量(吨) EQUIPMENT WEIGHT(T)	1.2	1.5	2	2.2	2.5	3.5	4.2
燃料 FUEL	PNG(管道气)LNG(液化气)ONG(液化天然气)						
加热介质 HEATING MEDIUM	320导热油、350导热油						

## Electric heating die temperature machine 电加热模温机

### 携手·绿色未来 HAND IN HAND · GREEN FUTURE

亿高人一直致力于环境保护，节约能源，为更多的客户提供更好的方案。

Yigao People has been committed to environmental protection, energy conservation, to provide more customers with better solutions.

#### 150KW、200KW电模温机

150kw、200kw Electric heating die temperature machine



#### 50KW、250KW防爆电模温机

50kw、100kw Electric heating die temperature machine



#### 50KW、120KW电模温机

250kw、300kw Electric heating die temperature machine

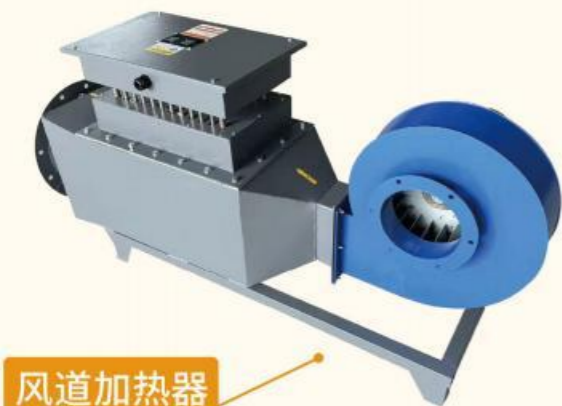


### 详细技术参数

Detailed technical parameters

	50KW	100KW	150KW	200KW	250KW
型号 Model	50KW1组 50KWx1Group	50KW2组 50KWx2Group	50KW3组 50KWx3Group	50KW4组 50KWx4Group	50KW5组 50KWx5Group
油泵 Oil Pump	3KW	5.5KW	7.5KW	11KW	15KW
最高温度 Maximum Temperature	300°C	300°C	300°C	300°C	300°C
设计压力 Design Pressure	0.6MPa	0.6MPa	0.6MPa	0.6MPa	0.6MPa
额定功率 Power Rating	50KW	100KW	150KW	200KW	250KW
温控模式 Temperature Controller	PLC	PLC	PLC	PLC	PLC
接入线径 Wire Inlet	25mm <sup>2</sup> 铜 25mm <sup>2</sup> ,copper	50mm <sup>2</sup> 铜 50mm <sup>2</sup> ,copper	75mm <sup>2</sup> 铜 75mm <sup>2</sup> ,copper	100mm <sup>2</sup> 铜 100mm <sup>2</sup> ,copper	125mm <sup>2</sup> 铜 125mm <sup>2</sup> ,copper
热效率 Thermal Efficiency	98	98	98	98	98
进出口管径 Inlet & Outlet Pipe Diameter	DN25	DN50	DN50	DN65	DN80
体容油量 Volume of Oil Accommodated	50	70	150	150	150
外形尺寸(mm) Dimensions(mm)	1700x626x1600	1700x626x1600	2200x1000x1380	2200x1000x1380	2200x1200x1680
设备自重 Equipment Weight	180kg	200kg	230kg	250kg	300kg

## Engineering Case 工程案例



风道加热器



管道加热器



真空清洗炉



燃气热风炉



颗粒模温机



防爆加热器



柴油模温机供热交换器  
Diesel model temperature machine heating exchanger



供热干法线  
Heating dry line



供热河北压延机  
Heating Hebei rolling machine



供热烘干箱  
Heating drying box



供热江苏涂布机  
Heat supply Jiangsu coating machine



供热贴合机、滚筒  
Heating laminating machine; roller



供热浙江涂层机  
Heat insulation coating machine in Zhejiang



供热真空烘箱  
Heating vacuum oven



临沂压贴厂  
Linyi pressure bonding factory



**江苏复合机供热**  
Tiangsu compound machine heating



**山东干燥机**  
Shandong dryer



**广西反应釜供热**  
Guangxi reaction kettle heating



**供热河北反应釜**  
Heating hebei reactor

**诚信合作**



图片均为工厂现场拍摄实景图，仅是部分案例.....  
All the pictures are real shots taken at the factory site, only part of the cases.....



**安徽电加热T**  
Anhui electric heating



**河北电加热带多层压机**  
Hebei electric heating zone, multilayer press



**电加热带压机**  
Electric heating press



**东北电加热带烘房**  
Northeast electric heating belt drying room



**河南木业供热**  
Henan wood heating industry



**电加热带单层压机**  
Electric heating zone, single compressor



**辽宁化工厂**  
Liaoning chemical plant



**山东电加热带压机**  
Shandong electric heating belt press



**新疆捏合机供热**  
Xinjiang kneading machine heating



**重庆烘房**  
Chongqing baking room



**供热安徽浸胶线生产线**  
Heating anhui dip line production line



**浙江干法线**  
Hebei double stick hot pressing factory



**浙江EVA发泡**  
Zhejiang eva foam



**山东木业热压机**  
Shandong wood industry hot press machine



**江苏食品工厂**  
Jiangsu food factory



**江西烘箱供热**  
Heating in jiangxi oven



**河南木业厂**  
Henan wood industry factory



**江西人造大理石**  
Jiangxi artificial marble



**山西绝缘材料**  
Shanxi insulation materials

## Why Choose Yigao? 为什么选择亿高?

感谢您在众多供热设备企业中选择了我们。

Thank you for choosing YANYI among so many heating equipment suppliers.

与同行相比我们的优势在哪里?

What are the advantages of choosing YANYI?

### 优势一

产品本身相比同类产品,其技术含量、质量标准及实际使用效果,都位于领先水平。在设计每一款产品之前我们都做了大量市场调查,也可以根据具体的客户需求来个性化定制供热产品,让用户使用我们设备后既节约成本又环保。该设备为一键启动式,开机后无需专人操作,自动化工作。

### 优势二

贴心完善的客户服务与技术支持,为您提供省心、可靠的用户体验。从售前的技术咨询与方案设计,到实施中的设备对接与技术保障,直至售后的快速响应与持续的产品更新,为您提供全方位、专业可靠的服务。

如果您是以下:

- 需要供热设备的生产厂家
- 要求供热配套的机械厂家
- 提供供热能源的能源公司
- 机械设备安装团队
- 机械设备各级经销商

任何一个有需求、想了解供热设备的用户  
欢迎随时联系我们!

### ADVANTAGE A:

YANYI products are at the leading level in the industry, whether in terms of its techniques, quality standards, or the user experience. We have done a lot of market research before designing each product. We can also customize our heating equipment according to every specific customer needs. We guarantee that our equipment will save costs for you and be environmentally friendly. Our equipment is one-button start-up, and then it will work automatically. No special operation will be required.

### ADVANTAGE B:

Our well-rounded customer service and technical support provide you with worry-free and reliable user experience. From pre-sales technical consultation and program design to equipment docking and technical support during implementation, to after-sales quick response and continuous product updates, we provide you with all-round, professional, and reliable services.

If you are one of the followings:

- A heating equipment user
- A machinery manufacturer that requires supplementary heating equipment
- An energy company that provides heating energy
- An installation team of mechanical equipment
- A mechanical equipment dealer at any level

Anyone who demands or wants to learn about heating equipment please feel free to contact us!